

New Zealand Gliding

With a comparison to Scotland

New Zealand



New Zealand



New Zealand

Bigger than UK

South Island area = England & Wales

Population 4.5 million (~3 million in N.I.)

Located at 35 – 45 S, 170 – 180 E

- Antipodes of Auckland is Tangiers, Morocco
- Sub-tropical in N, temperate in S

Most fronts are cold fronts – “good weather” zone

Maori name for NZ is “Aotearoa”

Land of the Long White Cloud



New Zealand South Island



New Zealand South Island

South Island is where the “big” gliding takes place (or starts!)

Approx. 800km x 200km oriented SW – NE

Dominated by Southern Alps (+12,000') , high vertical relief (+10,000' at Mt Cook)

Prevailing NW'ly winds – warm humid winds from Oz (hot) via the Tasman Sea (warm)

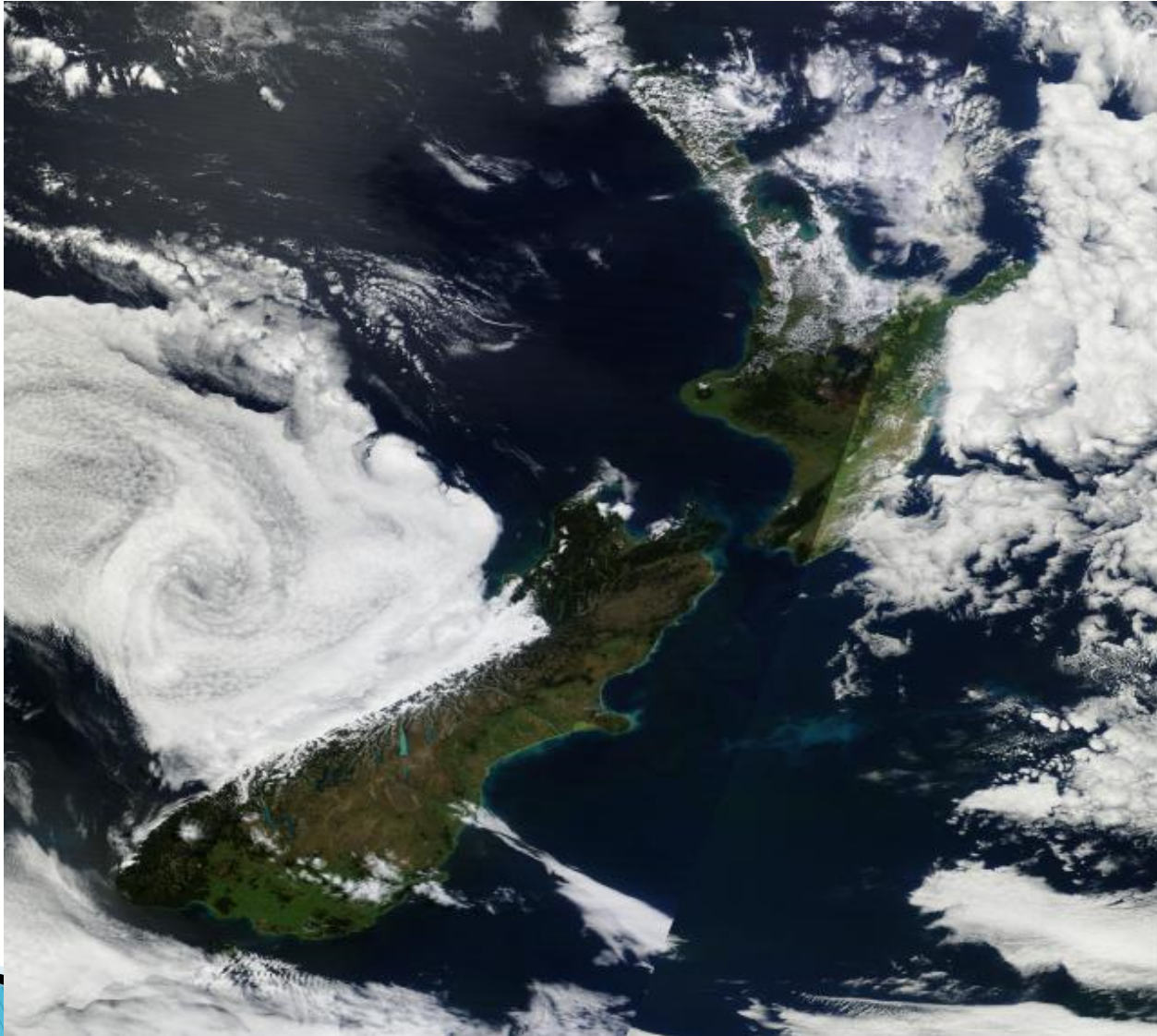
- very wet W coast (3 – 7m rain)

- very dry (0.3 – 0.7m rain), warm (Foehn effect) lee side

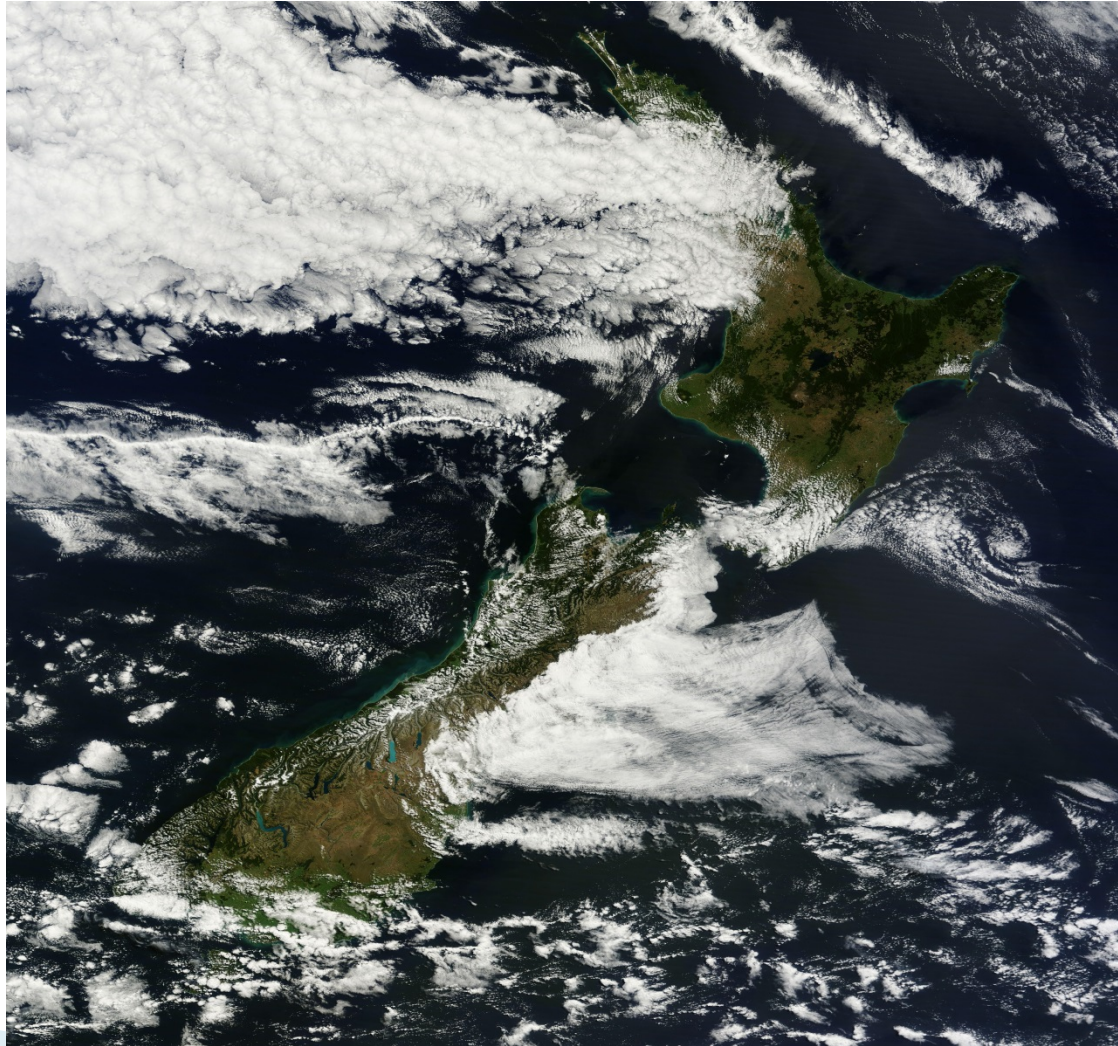
Southern Ocean to S is cold

Ideal set up for wave & thermal

New Zealand



New Zealand



New Zealand S. Island Gliding

True Alpine environment

- great vertical relief, steep slopes
- extensive rocky slopes and snowfields for heating contrast
- temperate climate => can be windy
- ridge, convergence, thermal, wave
- plus hydraulic jumps, anabatic lift, sea breezes

In addition

- good land-out options – flat valley bottoms due to extensive “braided streams” numerous ag strips and good fields
- but it is an unforgiving environment....

New Zealand – braided stream



New Zealand



New Zealand



New Zealand



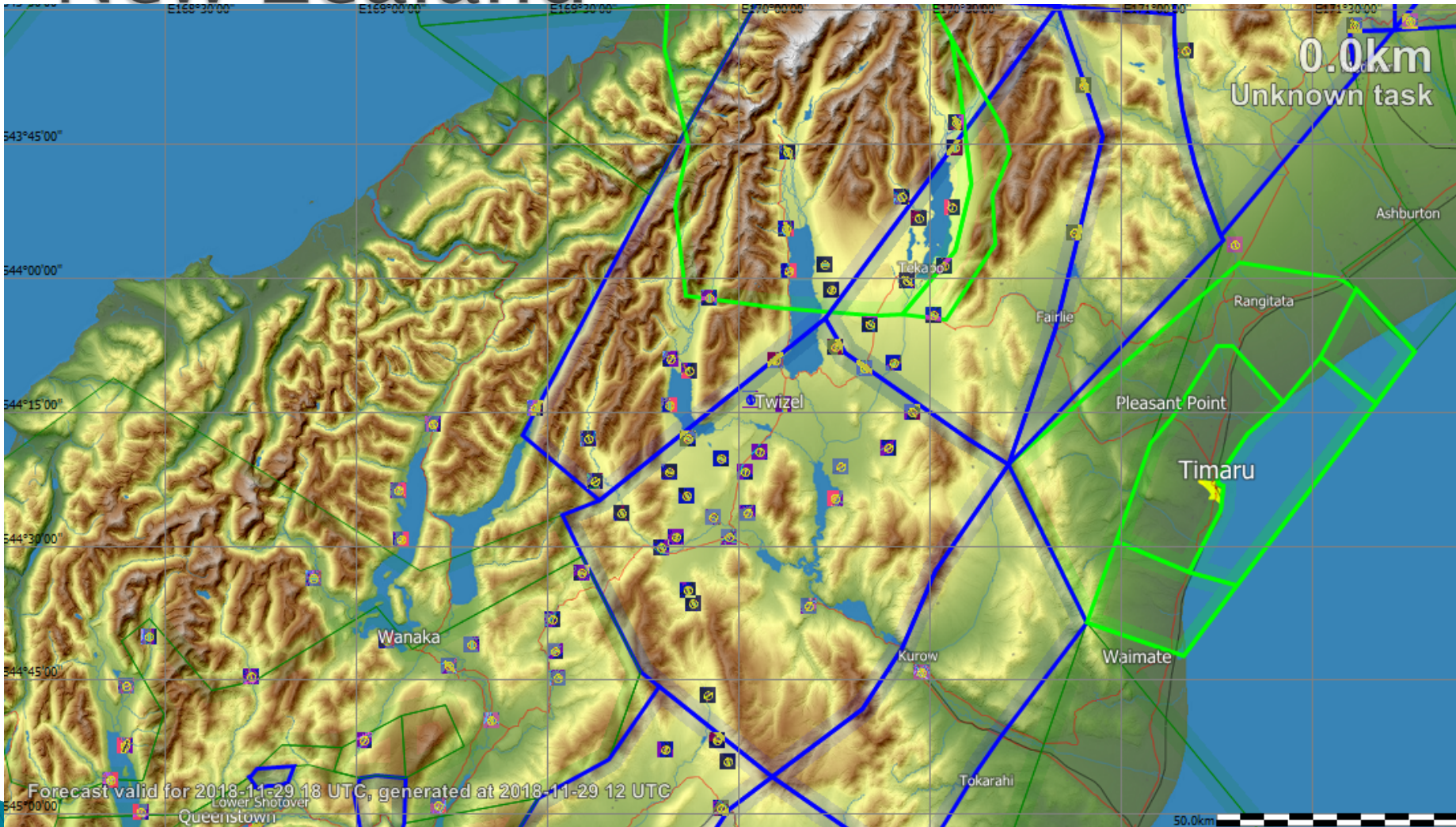
New Zealand



New Zealand – pilot stuff..

- Often a late start (1–2pm) unless on a long wave task
- SPOT or similar tracking device to assist monitoring & SAR
- Fly with O2 available – use early and stop late
- Landout book and map plus Oudie, etc – know where to land
- “5 winds” (surface, your altitude, ridges, cloud base, upper)
- “IFR” flying on thermic days
- Watch valley floor heating (lack of)
- Wave entry via ridge and rotor thermals
- Use water ballast for performance and comfort
- In v bad conditions fly east (downwind) and land out in Canterbury Plains or broad river valleys

New Zealand



New Zealand ouch!



New Zealand retrieve



New Zealand – Happy Ending



New Zealand vs Scotland

NEW ZEALAND S.I.

Alpine environment
Good weather
Dry climate
Lots of sunshine
Consistent good soaring

Good landout options

Fantastic scenery
Airspace OK

SCOTLAND

Large hills & lower relief
More maritime, humid air
More ground moisture/vegetation
Lower insolation
Changeable soaring conditions

Difficult landout options

Great scenery
Airspace OK – for now

But it's all mountain flying!

New Zealand

